



CAD/CAM

Block Overview

Block-Übersicht

for CEREC®/inLab®

IPS Empress® CAD

Leucite glass-ceramic | Leuzit-Glaskeramik

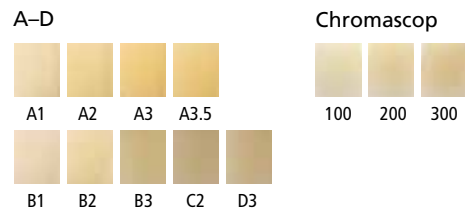
Multi



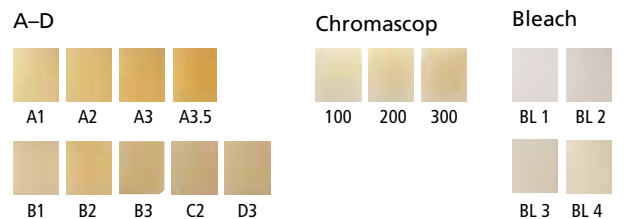
Shades | Farben



HT (High Translucency)



LT (Low Translucency)



Indications | Indikationen

Veneers, inlays, onlays, partial crowns, crowns

Veneers, Inlays, Onlays, Teilkronen, Kronen

IPS e.max[®] CAD

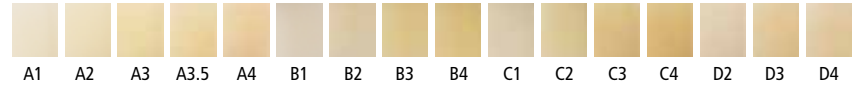
Lithium disilicate glass-ceramic (LS₂) | Lithium-Disilikat Glaskeramik (LS₂)

HT (High Translucency)



Shades | Farben

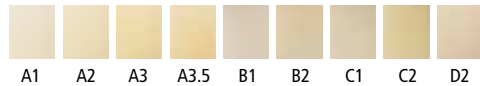
A-D



Bleach



A-D



Bleach



MT (Medium Translucency)



A-D



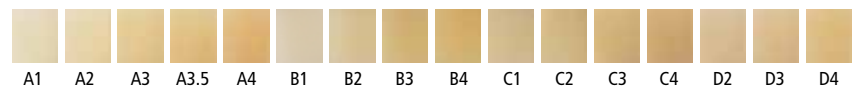
Bleach



LT (Low Translucency)



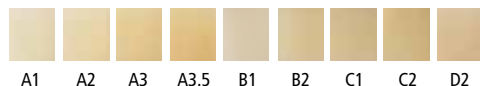
A-D



Bleach



A-D



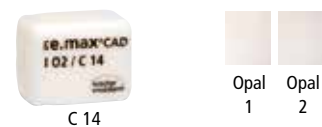
Bleach



MO (Medium Opacity)



Impulse



Indications | Indikationen

Thin veneers (0,4 mm), veneers, occlusal veneers, inlays, onlays, partial crowns, crowns, minimal invasive crowns (≥1 mm)***, multiple-unit bridges (IPS e.max CAD Veneering Solutions in combination with IPS e.max ZirCAD MO), hybrid abutments, hybrid abutment crowns, 3-unit-bridges (up to the second premolar as the terminal abutment)

Dünne Veneers (0,4 mm), Veneers, Okklusale Veneers, Inlays, Onlays, Teilkronen, Einzelzahnkronen, Minimalinvasive Kronen (≥1 mm)***, vielgliedrige Brücken (IPS e.max CAD Veneering Solutions in Kombination mit IPS e.max ZirCAD MO), Hybrid-Abutments, Hybrid-Abutment-Kronen, 3-gliedrige Brücken (bis zum zweiten Prämolaren als endständigen Pfeiler)

** Years of clinical experience have shown that the materials high strength in combination with adhesive cementation permit a crown layer thickness of at least 1 mm.

** Die langjährige klinische Erfahrung und die hohe Festigkeit in Kombination mit der adhäsiven Befestigung erlauben eine Kronenschichtstärke von mind. 1 mm.

IPS e.max® ZirCAD

Zirconium oxide ceramic (ZrO₂) | Zirkoniumoxid-Keramik (ZrO₂)

LT (Low Translucency)



C 17



B 45

Shades | Farben

A-D



A1 A2 A3 B1 B2* C2* D2*

Bleach



BL*

Indications | Indikationen

Full-contour crowns, full-contour 3-unit bridges

Vollanatomische Kronen, vollanatomische 3-gliedrige Brücken

* Coming soon | Demnächst erhältlich

MO (Medium Opacity)



C 13



C 15



C 15 L



B 40



B 40 L



B 55



B 65



B 65 L-17



B 85 L-22

Shades | Farben



MO 0 MO 1 MO 2

Indications | Indikationen

Crown frameworks, 3- to multi-unit bridge frameworks with max. 2 pontics

Kronengerüste, 3- bis mehrgliedrige Brückengerüste mit max. 2 Zwischengliedern

Telio® CAD

Cross-linked PMMA material | Vernetztes PMMA-Material

LT (Low Translucency)



A 16



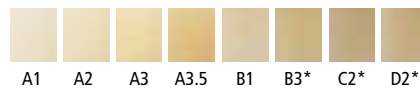
B 40 L



B 55

Shades | Farben

A-D



Bleach



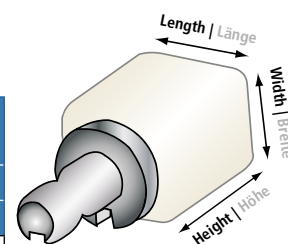
* Coming soon | Demnächst erhältlich

Indications | Indikationen

Temporary crowns and bridges, temporary hybrid abutment crowns

Temporäre Kronen und Brücken, temporäre Hybrid-Abutment-Kronen

Ivoclar Vivadent Block Dimensions Block-Dimensionen



| IPS Empress® CAD | | | | |
|-----------------------------|-----------------|---------------------|----------------|---------------|
| Abbreviation Abkürzung | IPS Empress CAD | Size Grösse in mm | | |
| | | Width Breite | Length Länge | Height Höhe |
| Inlay | I 8 | 8.0 | 8.0 | 15.0 |
| Inlay | I 10 | 8.5 | 10.0 | 15.0 |
| Inlay | I 12 | 10.0 | 12.0 | 15.0 |
| Crown | C 14 | 12.0 | 14.0 | 18.0 |
| Crown | C 14 L | 14.4 | 14.4 | 18.0 |

| IPS e.max® CAD | | | | |
|-----------------------------|---------------|---------------------|----------------|---------------|
| Abbreviation Abkürzung | IPS e.max CAD | Size Grösse in mm | | |
| | | Width Breite | Length Länge | Height Höhe |
| Inlay | I 12 | 10.4 | 12.5 | 15.0 |
| Crown/Abutment | C 14 / A14 | 12.4 | 14.5 | 18.0 |
| Crown/Abutment | C 16 / A16 | 17.8 | 15.8 | 32.0 |
| Bridge | B 32 | 14.5 | 14.5 | 32.0 |
| Bridge | B 40 | 15.2 | 15.2 | 38.0 |
| Bridge | B 40 L | 15.9 | 17.9 | 40.0 |

| IPS e.max® ZirCAD | | | | |
|-----------------------------|------------------|---------------------|----------------|---------------|
| Abbreviation Abkürzung | IPS e.max ZirCAD | Size Grösse in mm | | |
| | | Width Breite | Length Länge | Height Höhe |
| Crown | C 13 | 13.2 | 13.2 | 14.0 |
| Crown | C 15 | 14.5 | 15.5 | 18.5 |
| Crown | C 15 L | 15.4 | 19.0 | 20.0 |
| Crown | C 17 | 17.0 | 19.0 | 22.0 |
| Bridge | B40 | 14.2 | 15.5 | 40.0 |
| Bridge | B 40 L | 15.4 | 19.0 | 39.0 |
| Bridge | B 45 | 17.0 | 19.0 | 45.0 |
| Bridge | B 55 | 15.5 | 19.0 | 55.0 |
| Bridge | B 65 | 22.0 | 25.0 | 65.0 |
| Bridge | B 65 L-17 | 17.0 | 40.0 | 65.0 |
| Bridge | B 85 L-22 | 22.0 | 40.0 | 85.0 |

| Telio® CAD | | | | |
|-----------------------------|-----------|---------------------|----------------|---------------|
| Abbreviation Abkürzung | Telio CAD | Size Grösse in mm | | |
| | | Width Breite | Length Länge | Height Höhe |
| Abutment | A 16 | 17.8 | 15.8 | 18.0 |
| Bridge | B 40 L | 15.4 | 19.0 | 39.0 |
| Bridge | B 55 | 15.5 | 19.0 | 55.0 |

Date information prepared: 2017-04, Rev. 4

www.ivoclarvivadent.com

Ivoclar Vivadent AG

Bendererstr. 2 | 9494 Schaan | Liechtenstein | Tel. +423 235 35 35 | Fax +423 235 33 60

ivoclar
vivadent®
passion vision innovation