

The Renfert logo consists of the word "Renfert" in a white, bold, sans-serif font, centered within a red rectangular background. The text is flanked by two white, curved lines that resemble a stylized lens or a bridge.

making work easy



IDS
2017

News

- Equipment
- Instruments
- Materials
- and more

How do you know what makes work easier?

Easy working, clear direction. Renfert products have a wide range of advantages, which users will appreciate each day for years to come. You can identify them quickly and easily with these five icons:

making work easy



tool included



easy use



SILENT



perfect
view



compact



WORKFLOW GUARANTEE

3 year guarantee
10 year spare parts service
Activity guarantee

+ 3 year guarantee*

All Renfert Laboratory devices have a three year guarantee.* If at some point something does not function, you still have the comforting assurance that Renfert will find a solution to the problem under the guarantee. This builds trust.

*Wear parts excluded

+ 10 year spare parts guarantee

All Renfert products are very durable. Therefore we are well prepared with the availability of spare parts. Renfert guarantees that original spare parts will be available for every device, for the duration of at least ten years after purchase. This gives security.

+ The activity guarantee

Renfert service is outstandingly efficient. In cooperation with Renfert dealers and certified service partners worldwide, a strong, competent and passionate team is focused on minimizing possible failures in the laboratory. Thereby ensuring efficiency.

Renfert service works quickly and easily.

Trust is based on the certainty of always having a contact partner.

After-sales service, customer service and spare-part service, loan-unit service and repair service: our customer support has many competent facets and many highly motivated employees. Ultimately, however, only one thing counts: that your needs are addressed – as quickly as possible.



workflow guarantee
SUPPORT-CARD



call us

+49 7731 8208-0



write us

INFO@RENFERT.COM
SUPPORT@RENFERT.COM



making work easy

Extraction units, with maximum power and quietness

It is easy to concentrate and keep the workplace clean: with the SILENT extraction units.

This is what makes work easier

- 1 extremely quiet
- 2 strong suction power
- 3 intuitive operation
- 4 very long motor running time
- 5 easy calibration
- 6 modern, compact design



SILENT



compact



Renfert

WORKFLOW
GUARANTEE



Easy start, intuitive operation

Renfert extraction units can be very easily and quickly connected (Plug & Play), operated, cleaned and maintained. They provide the ideal filter technology for every requirement (with or without a bag depending on the version). The front of the unit allows convenient, direct access to all operating elements. All parameters can be very easily set using a membrane keypad or via a clear multifunctional display.

Combine cleanliness and quietness

Creating a conducive work environment is possible when the noise level is low and the fine dust level in the air has been greatly reduced. SILENT extraction units are therefore not only extremely powerful – with a suction capacity (depending on the version) up to a volume flow of 4000L/min. – but also surprisingly quiet, through implementation of the results gained from psycho-acoustic research.



Select the perfect size

SILENT extraction units are available as single-workstation, two-workstation or four-workstation extractors and also for use with a CAD-CAM system. All versions are compact and slimline.

making work easy for me means ...

... that the SILENT extraction units
are so pleasantly quiet
that I can fully concentrate
on my work.



Oliver Bothe
Product Management
Master Dental Technician



Simply connect and start extracting

Your dust generating devices are optimally controlled together with the workstation extraction units using the easily adjustable calibration of the automatic switch-on function. The SPS interface is the intelligent bi-directional communication with your CAM unit. It enables messages to be processed and measures initiated such as switching on and off, activation of the fine filter cleaning function and requesting the extractor's function status. All you need to do is connect the extraction unit to your CAM unit, and you're ready to start.

Increase process reliability with sophisticated motor technology

Two different motor technologies are available, which are both characterized by a very high service life.

The collector motors with an elaborate transformer controller provide a motor running time of > 1000 operating hours. If the motor has to be replaced after a long service life, this is easily completed within a few minutes. The EC motors with brushless turbine technology also have a long service life of > 5000 operating hours.



Overview SILENT

	SILENT compact	SILENT TS	SILENT EC2	SILENT TS2	SILENT V4	SILENT compactCAM	SILENT powerCAM EC
Single-workplace extraction	✓	✓					
Two-workplace extraction			✓	✓			
Four-workplace extraction					✓		
Device extraction	✓	✓					
CAM extraction						✓	✓
Filter bag		✓		✓			
Bag-free	✓		✓		✓	✓	✓
Collector motor	✓	✓		✓		✓	
EC turbine			✓		✓		✓



SILENT powerCAM EC

Device extraction unit for CAM systems

Powerful extraction unit with EC motor, bag-free, fine filter technology, suitable for frequently used CAM systems.



SILENT

“Why are our SILENT extractors so quiet? Some noises are more stressful than others. We worked with psychoacousticians who showed us the unpleasant frequency ranges. This allowed us to minimize the noises drastically in this range and provide the units with a pleasant audio frequency.”

Joachim Egelhof, Management

Advantages

- Reliable production process thanks to a low-maintenance EC motor with 5 000 guaranteed operating hours.
- Suitable for CAD-CAM systems requiring high suction performance due to a powerful motor with a max. flow rate of 4 000 l/min.
- High operating comfort thanks to bidirectional communication with the CAM system via PLC control.

Details

- No dust bag change due to bag-free fine filter technology, including automatic filter cleaning.
- Safe disposal of fine milling dusts with the aid of a disposal bag.
- Very low operating noise of 54.3 dB(A).

Technical data

Permissible mains voltage / frequency	220–240 V, 50/60 Hz 100–120 V, 50/60 Hz
Suction turbine power	1610 W (230 V) 1440 W (120 V)
Volume flow (max.)	3984 l/min (2.34 ft ³ /s)
Max. depression	257 hPa / 3.2 psi (230 V) 262 hPa / 3.80 psi (120 V)
Filter quality	Class M according to EN 60335-2-69
CAM interface	RJ 45 socket
SPS:	2x inputs / 2x outputs,
Input signal / Output signal	turbine suction level 1, suction level 2, turbine off, filter cleaning – status information
LpA* (at max. volume flow)	54,3 dB(A)
Weight (empty)	approx. 18.0 kg (39.7 lbs)
Dimensions (W x H x D)	270 x 535 x 540 mm (10.6 x 21.1 x 21.2")
Ø suction fittings, interior / exterior	Connection only inside possible – Ø 42 mm
Fill volume, dust drawer	approx. 7 l (1.85 gal)

*) Sound pressure level

Ordering information

SILENT powerCAM EC, 220–240 V 50/60 Hz	No. 2939 0000
SILENT powerCAM EC, 100–120 V 50/60 Hz	No. 2939 1000

Extent of delivery SILENT powerCAM EC

1 SILENT powerCAM EC, 1 Quick Start Guide, 1 Quick Reference Card, 3 disposal bags (1 pc. inserted in the dust drawer), 1 suction hose 2 m, incl. 2 mufflers

Further information

www.renfert.com/P154





SILENT



SILENT EC2

Two workbench extraction unit

Extraction unit for Power-Users with two suction ports, bag-free for lower operating costs.

Technical data

Permissible mains voltage / frequency	220–240 V, 50/60 Hz 100–120 V, 50/60 Hz
Suction turbine power	1610 W (230 V) / 1440 W (120 V)
Volume flow (max.)	3984 l/min (2.34 ft ³ /s)
Max. depression	257 hPa / 2.9 psi (230V) 262 hPa 3.80 psi (120V)
Filter quality	Class M according to EN 60335-2-69
Max. connected load for appliance socket	1840 W (230 V), 360 W (120 V)
Total connected power	3450 W (230 V) / 1800 W (120 V)
Min./ max. connection pressure	4,5 bar (65 psi) / 8 bar (116 psi)
Number of suction hoses	2
LpA* (at max. volume flow)	55 dB(A)
Fill volume, dust drawer	approx. 7.0 l (1.85 gal)
Weight (empty)	approx. 18.5 kg (40.8 lbs.)
Dimensions (W x H x D)	285 x 535 x 540 mm (11.2 x 21.1 x 21.2")
Ø suction fittings, interior	45 mm (1.77")
Ø suction fittings, exterior	50 mm (1.97")

*) Sound pressure level

Ordering information

SILENT EC2 , 220–240 V 50/60 Hz	No. 2937 0000
SILENT EC2 , 100–120 V 50/60 Hz	No. 2937 1000

Extent of delivery SILENT EC2

1 SILENT EC2, 1 Quick Start Guide, 1 Quick Reference Card, 1 compressed air tube (fixed on the unit), connection set, 2 pinch valves with suction supports (already installed), 1 suction hose 4 m, 4 end mufflers

Further information

www.renfert.com/P154



Advantages

- Problem-free operation due to a low-maintenance EC motor technology (> 5 000 operating hours).
- Consistently high suction power thanks to intelligent power control for optimum dust removal.
- Working without interruption with an easy motor change within minutes.

Details

- No dust bag change required due to bag-free fine filter technology, including automatic filter cleaning.
- No additional noise immission due to the low operating noise of only 55 dB(A).

SYMPRO

Denture cleaning unit

Compact, high-performance cleaning unit especially suited for dentures, orthodontic appliances and other dental restorations.



“Why is the SYMPRO so efficient? As the bowl is positioned at 35°, the denture is situated against the current flow due to gravitational force enabling the needles to clean it optimally.”

**Oliver Bothe, Product Management,
Master Dental Technician**

Advantages

- Validated, hygienic treatment of bowl, needles and tweezers.
- Up to 80% resource savings compared to conventional methods thanks to effective and automated cleaning process.
- Increased customer retention with a prophylaxis service for denture wearers

Making work easy

SYMPRO helps in the early detection of damage due to regular, prophylactic cleaning. Functional reliability based on high-quality processing. Easy, intuitive operation ensures high process reliability.

Technical data

Permissible mains voltage / frequency	100–240 V, 50/60 Hz
Power consumption	90 VA
Rotational speed	1200 / 1600 / 2000 1/min
Dimensions (W x H x D)	150 x 240 x 280 mm (5.91 x 9.45 x 11.02")
Weight w/o bowl	approx. 3 kg (6.6 lbs.)

Ordering information

SYMPRO , 100–240 V	No. 6500 0000
Cleaning needles , 75 g (2.63 oz.)	No. 6500 0550
SYMPROfluid Universal , 2 x 2 l (2 x 0.53 gal)	No. 6500 0600
SYMPROfluid Nicoclean , 2 x 2 l (2 x 0.53 gal)	No. 6500 0610

Extent of delivery SYMPRO

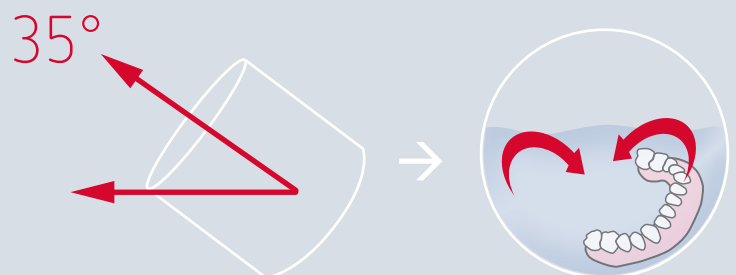
SYMPRO, 1 tweezer, 1 cleaning vessel with cover for use in cleaning device, 1 cleaning bowl with cover (white) for post-treatment, retaining magnet, cleaning needles

Further information

www.renfert.com/P1735



Bowl position for optimal cleaning



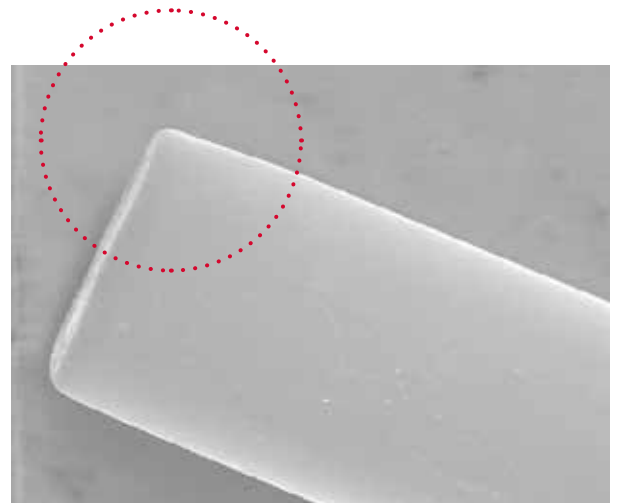


Well Coordinated

A rotating magnetic field makes the cleaning needles move and causes gentle mechanical removal of the surface deposits. The bowl inclination of 35° allows ideal, fast cleaning performance.

Hygienically Treated

Hygienic preparation of the cleaning bowl, cleaning needles and tweezers can be carried out either by means of a manual or mechanical/thermal disinfection process. The efficiency of the respective treatment process has been validated by an accredited test laboratory according to the standards EN ISO 17664, EN ISO 15883-2, ISO / TS 15883-5, AAMI TIR 30:2011.



We have the ideal chemistry!

Suitable cleaning fluids for this denture cleaning technology are:

SYMPROfluid Universal

is a cleaning liquid which is used in combination with the SYMPRO denture cleaning device. It quickly and reliably removes frequently occurring deposits such as plaque and tartar.

SYMPROfluid Nicoclean

is a cleaning liquid for application outside of the SYMPRO denture cleaning device. It frees dentures from severe nicotine stains.



lay:art oasis

Mixing tray

High-tech porcelain mixing tray with glazed surface and perforated wells. Automatic capillary moistening for processing and storing of dental ceramic materials.



„making work easy“ for me means ...

... that the lid is easily detachable at an angle of 90° and locks when open at an angle of 120°.

This provides me with an optimum view on the rewritable labeling foil.

Joanna Deligianni,
Product Management, Dental Technician

Advantages

- The porcelain remains processable for a long time thanks to the continuous moistening by means of a micro-foam moistening pad.
- Safe working due to permanent optimal consistency of porcelain.
- Gentle on the brush thanks to a completely glazed surface.

Details

- Integrated anti-surge ridges and recessed grips ensure safe transport.
- The re-writable foil in the lid ensures organized management of the porcelains on the tray.

Technical data

Tray dimensions	159 x 9 x 90 mm (6.26 x 0.35 x 3.55")
Housing size	211 x 28 x 147 mm (8.31 x 1.10 x 5.79")

Ordering information

lay:art oasis	No. 1045 5000
Labeling foil natural, tropic (pro) s, oasis, 3 pcs.	No. 1046 0100

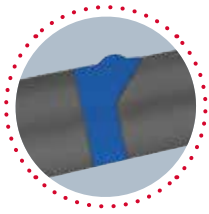
Overview mixing trays

	With moistening system	Without moistening system	Stains
lay:art crystal aqua	✓	–	–
lay:art tropic pro	✓	–	–
lay:art tropic	✓	–	–
lay:art oasis	✓	–	–
lay:art crystal	–	✓	–
lay:art natural	–	✓	–
lay:art color	–	–	✓
Rainbow	✓	–	–
Porcelain mixing tray	–	✓	–
Stain-Mix	–	–	✓
Melody	–	–	✓

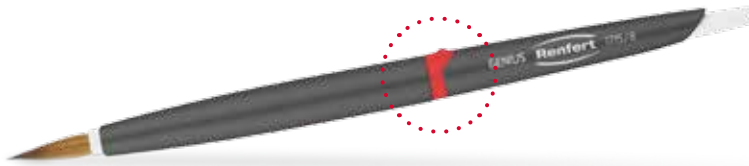
Further information

www.lay-art.de





Size code &
roll-away protection



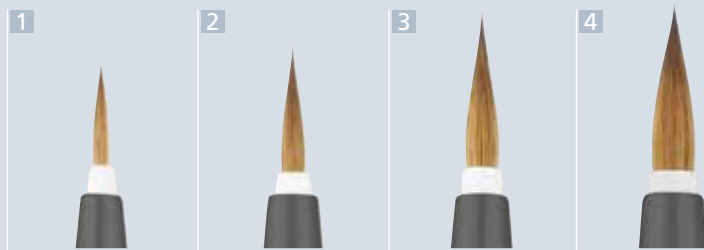
Genius

Natural bristle brush with protective function

High quality, natural hair brushes in a modern design with a protective function integrated in the handle. In order for the brush hair to have a high level of strength, shape stability and longevity, Renfert uses a unique manufacturing technique.

Ordering information

Genius set with 4 brush sizes (2, 4, 6, 8)	No. 1715 0000
1 Genius size 2, 1 piece	No. 1715 0002
2 Genius size 4, 1 piece	No. 1715 0004
3 Genius size 6, 1 piece	No. 1715 0006
4 Genius size 8, 1 piece	No. 1715 0008
Genius refill, size 2, 2 pieces	No. 1715 1002
Genius refill, size 4, 2 pieces	No. 1715 1004
Genius refill, size 6, 2 pieces	No. 1715 1006
Genius refill, size 8, 2 pieces	No. 1715 1008



Protective function



Advantages

- Brush hair has a long service life due to an innovative protective function.
- Slim tip shape due to the high quality brush hair.
- Especially economical due to easily interchangeable brush inserts.

Details

- The protective function can be easily activated via a smooth rotation mechanism.
- Controlled drying process due to the ventilated protective function.
- Consistent haptics for all holding positions.
- Integrated roll-away protection.



Modeling natural contours more easily.

→ GEO Waxes

Waxes to suit every requirement

The GEO wax ranges include the optimum modeling wax for crown and bridge and CrCo work. These waxes were developed with the constantly increasing demand for better quality and esthetics in mind.

This is what makes work easier

- 1 optimum waxing up and modeling properties
- 2 high-quality materials
- 3 coordinated to working with electric wax knife and open flame
- 4 very low shrinkage behavior
- 5 wide selection for every requirement



Ensure excellence: with GEO Expert

The top-quality modeling waxes, specially developed in collaboration with August Bruguera, are ideal for experts, individualists and technicians eager to learn with a high esthetic demand for the restoration.



Work flexibly: with GEO Classic

With the high-quality, versatile GEO Classic range of modeling waxes every dental technician can find the correct wax for his individual requirements, whether for single crowns or highly complex bridge restorations.



Work efficiently: GEO Crowax

All restorations in crown and bridge work, and in CrCo work can be fabricated very cost-effectively using these uncomplicated modeling waxes from the GEO Crowax range.



→ Renfert Performance-Test:
www.renfert.com/waxes



making work easy
for me means ...

... that the wax can be modeled
easily and reliably during any step
in the process chain.

Wolfgang Weber
Application Technology,
Master Dental Technician

GEO Expert Gingiva Set A. Bruguera

Gingiva colored modeling waxes

The GEO Expert Gingiva waxes in pink and red are suitable for creating a wax-up of the gingiva in the anterior and posterior region, in particular for implant superstructures.



With the help of a guide according to August Bruguera's philosophy, different gingiva-colored, monolithic and esthetic wax-ups can be fabricated in a simple and realistic way.

Advantages

- Red and white esthetics are possible through two transparent and natural-looking pink and red gingiva modeling waxes.
- Perfect in combination with the esthetic, tooth-colored modeling waxes from the GEO Expert Wax Set A. Bruguera.
- Fast and clean wax-up of gingiva areas due to excellent modeling and processing properties, especially when applied using an electric wax knife.

Ordering information

GEO Expert Gingiva Set A. Bruguera, German	No. 6340800
GEO Expert Gingiva Set A. Bruguera, English	No. 6340801
GEO Expert Gingiva Set A. Bruguera, Spanish	No. 6340802
GEO Expert Gingiva Set A. Bruguera, Italian	No. 6340803
GEO Expert Gingiva Set A. Bruguera, French	No. 6340804
GEO Expert Gingiva Set A. Bruguera, Portuguese	No. 6340805
GEO Expert Gingiva Set A. Bruguera, Russian	No. 6340806
GEO Expert Gingiva Set A. Bruguera, Chinese	No. 6340807
GEO Expert Gingiva pink A. Bruguera, 40 g (1.41 oz.)	No. 6340700
GEO Expert Gingiva red A. Bruguera, 40 g (1.41 oz.)	No. 6340600

Contents GEO Expert Wax Set A. Bruguera

User guide according to the philosophy of August Bruguera; 2 gingiva colored modeling waxes of 40 g (1.41 oz.) each: GEO Expert Gingiva pink, red.

Range of applications

GEO Expert A. Bruguera	Conventional crown and bridge techniques	All-ceramics and pressable ceramics*	Esthetic wax-up	Special waxes
pink	✓	✓	✓	–
red	✓	✓	✓	–

*burns without residue



GEO Crowax

Modeling waxes



These modeling waxes are suitable for use with a naked flame and an electric wax knife. The organic, transparent GEO Crowax modeling waxes burn-out residue-free and are suitable for full and press-ceramic techniques.

Advantages

- Very good modeling and carving characteristics due to coordinated material properties.
- High precision and fitting accuracy due to low shrinkage.
- Quick waxing due to small melting range.

Ordering information

GEO Crowax , green-transparent, medium hard, 80 g (2.82 oz.)	No. 475 0100
GEO Crowax , blue-transparent, medium hard, 80 g (2.82 oz.)	No. 475 0200
GEO Crowax , red-transparent, medium hard, 80 g (2.82 oz.)	No. 475 0300
GEO Crowax , beige-opaque, medium hard, 80 g (2.82 oz.)	No. 475 0400
GEO Crowax , gray-opaque, medium hard, 80 g (2.82 oz.)	No. 475 0500

GEO Crowax

Cervical and undercut wax



The universal GEO Crowax cervical and undercut wax, is a tension-free, soft to medium hard special wax for the cervical margin, as well as for building-up cavities and flooding. This cervical and undercut wax has organic constituents and burns-out residue-free. It is suitable for use in conventional crown and bridge techniques and also for full and press-ceramic techniques.

Advantages

- Easy adaption due to soft and slightly elastic wax consistency.
- Ultra thin preparation margins due to very good carving qualities.
- High precision and fitting accuracy due to low contraction.

Ordering information

GEO Crowax Cervical and undercut wax , red-transparent, soft-medium hard, 80 g (2.82 oz.)	No. 475 0600
--	--------------



Renfert

Why a passion for dental craftsmanship and making work easy go hand in hand for Renfert.

Renfert has been committed to one claim for decades: we make the work of dental technicians easy.

Many users perceive the simplicity, prize the quality and rely on this claim every day that they work with Renfert.



making work easy



Renfert

WORKFLOW GUARANTEE

3 year guarantee
10 year spare parts service
Activity guarantee

www.renfert.com